

# How to use MiniOS7 Studio on the G-4500 series?

**Note: after Version 1.07 of MiniOS7 Studio, the MiniOS7 Studio supports G-4500.**

Step1. Please include `<icpdas.h>` after open MiniOS7 Studio software.

For example :

```
#define _MINIOS7_STUDIO_
```

```
#ifndef _MINIOS7_STUDIO_
```

```
#include <icpdas.h>
```

```
#else
```

```
#include <stdio.h>
```

```
#include <string.h>
```

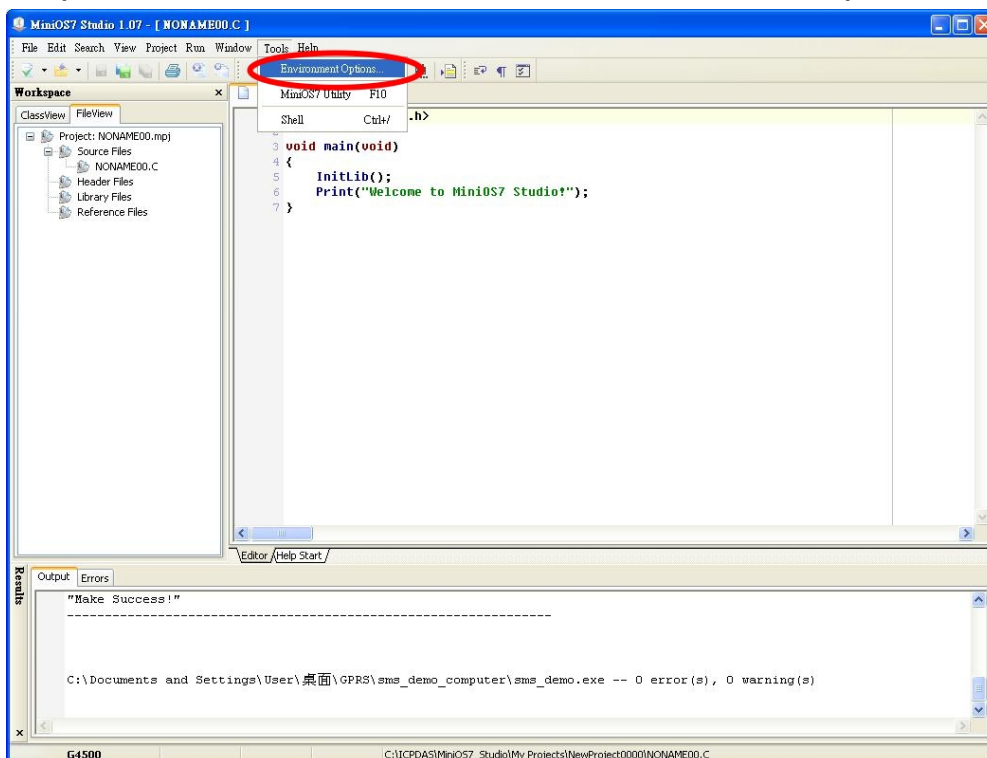
```
#include <conio.h>
```

```
#include "G4500.h"
```

```
#include "GPRS.h"
```

```
#endif
```

Step2. MiniOS7 Studio → Tools → Environment Options



Step3. Controller & Associations → **G4500** → Click “OK”

